

PARISH INFORMATION News SHEET

*Parish of Newcastle and Newtownmountkennedy
with Calary*

Rector: Rev William Bennett 087-9480317



NOVEMBER 2014

Please send any items for inclusion in December PINS to:
information.pins@gmail.com

Items must be received by Tuesday 20th November for publication

Please note that times of services and events can vary.

If you lose your copy of PINS check out the parish website:

www.newcastleparish.org www.newtownmountkennedyparish.org
www.calaryparish.org and click on 'Calendar of Events'.

From the Rector's Desk

Dear Parishioners,

The little girl once asked, "Mummy, do all fairy-tales begin with 'Once upon a time'?" The mum quickly replied, "No, darling, some of them begin with "When I became a christian all my problems were over". I have met many people who have had their faith shaken to the core because they expected their lives to be insured against all trouble and suffering. On the other hand some of the most inspired Christians I have met have been those who have gone through great and horrific fires of trials.

James 1:2-4 is one of many passages which put some kind of a frame around our trials and suffering to help us understand that not all suffering is negative. Of course we have many situations in life which present us with great difficulty and many things happen in this world which we can't explain. I believe that the problem of suffering still presents us with the greatest challenge to faith. This challenge is usually as a result of many very false ideas taught about God and his willingness, or unwillingness to intervene in the great struggles and difficulties many people are forced to face in life.

As humans, with a limited understanding of what eternity means, we are usually prone to think only in terms of time and this life. We, unlike people in ancient times, are focused on what this life has to offer and therefore lose out on the bigger and all-important picture. Jesus is the image of God and is God revealed to us. His example is one of having suffered more than any other person. The early believers in the New Testament expected to suffer and many of them, as well as millions since, have gone through severe testing and suffering. We are told plainly in scripture that to follow Christ means taking up the cross; a cross always presents trials!

What Jesus does offer is the strength to help us through whatever difficulties we might face. We can be assured that he understands each situation and his promise is that he will never allow us to be tested more than we can bare. That, for many of us, can mean we are pushed right to the limits of our endurance. If we have a view of God as one who always shields his children from hard times then that view is not based on Scripture. Unlike the response of the mother to her little girl the reality is that for many people it was and is when they decide to follow Jesus that the major challenges begin.

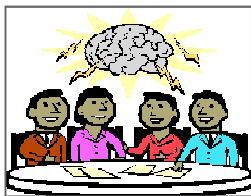
Real faith means that 'With Christ in the vessel we can cope with the storm' . "May God give me the courage to change the things I can, to accept the things I cannot change and the wisdom to know the difference"

God Bless,

William



FAMILY TABLE QUIZ



Friday 16th Nov from 7pm

St Francis School Hall.

€10 per family per table (max 6 per table).

Please bring all the family for a fun night out.

Great prizes and bumper raffle.

Run by St Francis PA in aid of school funds

Clubs and Organisations

Sunday School

Sunday School Outing—2nd December 2012 to Causey Farm.

Form is enclosed. Places are limited so forms need to be returned with fee by 12th November to either Lorraine or Karen.

We will be holding a coffee/cake sale in the cottage on Friday 23rd November from 1pm to 3pm to assist with costs of the trip. Donations of cakes and tray bakes would be much appreciated.

Please let us know if you can help.

On a separate note, the Nativity Play will take place on 9th December. Children will be practising over the month of November so it's important to have good attendance each week. *Lorraine*



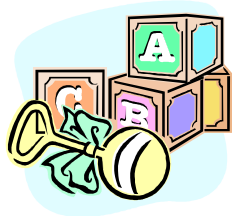
Creche

The crèche is open in Rectory Cottage during all morning services in Newcastle Church. All pre-schoolers welcome.

Parent and Toddler Group

The Parent and Toddler Group meets every Monday morning from 10.30am in Rectory Cottage. Everyone with a baby or toddler is welcome to drop in for a chat and a play.

Information from Wendy at 086-8478415



Youth Club

Youth Club will meet on the first and third Fridays in the month. Look out for your text from Paul.

Information from Paul at 085-7871541

Time Out

Time Out continues to meet on Tuesday evenings at 8pm in Rectory Cottage. This season the group is studying Mark's gospel. Please feel free to drop in any Tuesday.

Bowls Club

The Bowls Club meets every Thursday at 8pm in the school. New members very welcome.

Table Tennis

The table tennis club continues to meet on Mondays at 8pm in the McLean Room (behind St Matthew's church). New members very welcome.

Newcastle Choir

We are rapidly approaching the end of one Church year and the beginning of the next on Advent Sunday, 2nd December. The last Sunday of the church calendar, November 25th, is designated as the Feast of Christ the King in the Roman Catholic and Anglican traditions and the Psalm appointed for that day in the Revised Common Lectionary is appropriately Psalm 93 – 'The Lord is King and has put on Glorious apparel'. We will sing this as a congregation to a well known chant by George Macferran. Macferran was a 19th century Londoner who was a professor at the Royal Academy of Music and later Cambridge University. The choir will also sing a short anthem by the popular composer John Rutter – "Open thou mine eyes....O Lord God be thou to me a God and beside thee let there be none else", which is quite appropriate for the occasion.

The choir will recommence rehearsals for Advent and Christmas, after a short mid-term break, on Monday November 12th. It would be lovely to have some extra voices for Christmas, so please come and join us to sing some lovely carols at the carol service on December 16th in St Matthews and on Christmas Eve. *Andy Sleeman*

Safeguarding Trust Training

The Parish is organising a training and information meeting for our Sunday School, Youth Club, Creche, Parent & Toddler volunteers, that have not received such training, in the McLean Room, St. Matthew's Church, Newtownmountkennedy on **Thursday 29th November at 19:30**. Ms. Olive Good, Diocesan Regulator for Safeguarding Trust will hold the meeting and she expects it to last no longer than two hours.

John Geraghty

N and N PARISH NEWS

Holy Baptisms at Newcastle

Sunday 21st October

Ralph James son of Geoffrey and Rachel Walker, Goodwood, Newcastle and *Ruairí Clive* son of Clive and Nina Coffey, 25 Sharonwood, Katesbridge, Co Down.

We welcome Ralph and Ruairí to our church community, and we pray that they grow up to honour the promises made for them at baptism.

Coffee in the Cottage

Everyone is very welcome to drop in to Rectory Cottage any Tuesday morning from 10.30am.—but be warned, it can be hard to leave the lovely fire and the convivial atmosphere.

Monthly Lunch

The November lunch will take place on Thursday 15th at 1pm in Rectory Cottage. Don't forget to book your place with Karen at 087-2866889.

Breakfast in the Cottage

For those of you who attend the monthly service in Newcastle Church for St Francis School on the last Thursday in the month, you will be happy to know that the provision of breakfast has resumed in Rectory Cottage. It is served from 8.40am and anyone is welcome to pop in before going over to the church. Gillian O'Neill has undertaken to take charge of breakfasts with a team of helpers. Many thanks to her for carrying on this enjoyable parish/school link.

Cottage Christmas Outing

It's time for another outing from the cottage. On Tuesday 4th December we plan to go by bus to Dublin to see the Christmas lights, do a little Christmas shopping, and soak up the atmosphere in Grafton Street. Then we'll head off to The Westbury for a Christmas Afternoon Tea, where we can relax in the Gallery while looking down on the Christmas shoppers below. There'll be a few surprises thrown in too. Cost is €45 and you can book your place with Karen at 087-2866889.

CALARY NEWS

Sustentation

The envelopes were included with last month's PINS and the Treasurer would appreciate if parishioners would return these as soon as possible.

Congratulations

Congratulations to Lynne O'Connor and Ian Wortley on the birth of their daughter Harriet.

Harvest Supper

A special thanks to all who made this event on Saturday 20th so enjoyable.

Music in Calary

The last event for 2012 was held on Friday 12th October when Fionnuala De Búrca (soprano), Aingeala De Búrca (violin) and Joe Bradley (harpsicord) performed a wonderful series of works to an audience that filled the church. The committee would like to thank all who performed and helped at the events this year and also to all those who attended and showed their appreciation.

Sunday School

Sunday School takes place every Sunday, except when there is Family Service.

Table Tennis

Table tennis continues every Thursday with juniors between 7 and 8pm and adults from 8pm.

Roundwood Historical Society

Michael Seery, the author and local historian, will give a talk entitled "Enniskerry: the Estate Village of Powerscourt" at 8.30 on Monday 26 November in the Old School, Roundwood. No booking is necessary and all are welcome.

Children's Page

Man shall not live on bread alone,
but on every word that comes
from the mouth of God

Matthew 4:4



WORDSEARCH

T	I	M	O	T	H	E	U	S
S	A	N	A	H	P	E	T	S
W	X	W	Z	R	L	D	P	M
L	U	K	E	R	T	E	P	A
S	B	T	T	H	O	N	D	R
Z	E	E	Y	N	T	M	O	K
P	P	M	Z	H	A	T	G	J
X	A	W	A	O	L	U	A	P
S	U	S	E	J	Y	R	A	M

Matthew - John - Jesus - Timotheus - Stephanas - Paul -
Luke - Peter - Mary - Mark - God - James

Q. How long did Cain hate his brother?
A. As long as he was Abel.

NORTH WICKLOW COUNTRY MARKET

NEWCASTLE COMMUNITY CENTRE

EVERY SATURDAY 10.30 TO 12

From the beginning of November we will have our regular Christmas tastings table (located at the Order table near the front door) and you can taste samples of the different Christmas cakes, puddings and mince pies that we will have on offer.

You can order your favourites and arrange when to pick them up.

We will also have a small table in the hall which will show a selection of the Christmas food and craft items we have for sale

SHOP LOCAL THIS CHRISTMAS

Better Energy Warmer Homes Scheme

What is the Better Energy Warmer Homes Scheme?

Better Energy Warmer Homes (BEWH), administered by the Sustainable Energy Authority of Ireland (SEAI), funds energy efficiency improvements in the homes of the elderly and vulnerable, making their homes more comfortable, healthier and more cost effective to run.

What services are available?

The service involves the installation of standard energy efficiency measures appropriate to the eligible household subject to SEAI survey, budget allocation and available capacity. The service is provided at **no cost to the household** and the measures currently available under this scheme are:

- Attic insulation;
- Draught proofing;
- Lagging jackets;
- Low energy light bulbs;
- Cavity wall insulation;
- Energy advice.

Who can avail of the Scheme?

This scheme is available to homes which meet the following criteria:

- Owner occupied, non-Local Authority homes
- Constructed before 2002
- The owner is in receipt of one of the following:
 - Fuel Allowance as part of the National Fuel Scheme
 - Job Seekers Allowance for over six months and with a child under seven years of age
 - Family Income Supplement

Landlords can avail of grants from Better Energy Homes if they have tenants in, or at risk of, energy poverty. See www.seai.ie/BetterEnergyHomes for more information.

How do you apply to the Better Energy Warmer Homes scheme?

Contact Warmer Homes Bray @ 2866080
or email warmerhomes@braycommunityenterprise.ie

ETHAN'S CHRISTMAS EXTRAVAGANZA



**In Aid of the New Cardiac Unit
at Crumlin Hospital**

Saturday 8th December

**3 - 5pm for Afternoon Tea OR
8pm til late to Party! (Adults Only)**

**Karen & Gerry Reynolds' House
Sunrise, Newcastle**

**We'd love to see you
No presents, just bring a donation**

SERVICES IN NOVEMBER

DATE	CHURCH	TIME	SERVICE	READING
------	--------	------	---------	---------

Sunday 4th

(CT)	Calary (SS)	9.30	MP	Ruth 1:1-18
(CT)	St Matthews	10.45	MP	Heb.9:11-14
(WB)	Newcastle (SS)	12.00	HC	

Sunday 11th

(WB)	Calary (SS)	9.30	MP	1Kings 17:8-16
(MC)	St Matthews	11.00	Remembrance Service	Mark 12:38-44

Sunday 18th

(WB/PMc)	Calary (SS)	9.30	MP	Phil. 4:4-9
(WB/PMc)	St Matthews	10.45	MP	
(WB/PMc)	Newcastle (SS)	12.00	MP	

Sunday 25th

(WB)	Calary (SS)	9.30	HC	Rev. !:4-8
(CT)	St Matthews	10.45	MP	John 18:33-37
(CT)	Newcastle (SS)	12.00	MP	

WB	William Bennett	CT	Caroline Tindal
MC	Michael Croly	PMc	Paul McAndrew
SS	Sunday School		



Holy Communion is celebrated every Wednesday, with prayer for the sick, at 10.30am in St Matthew's, followed by a cup of tea / coffee and chat in the McLean Room.

All welcome!

Tea and coffee are served in the McLean Room after each service in St Matthew's.